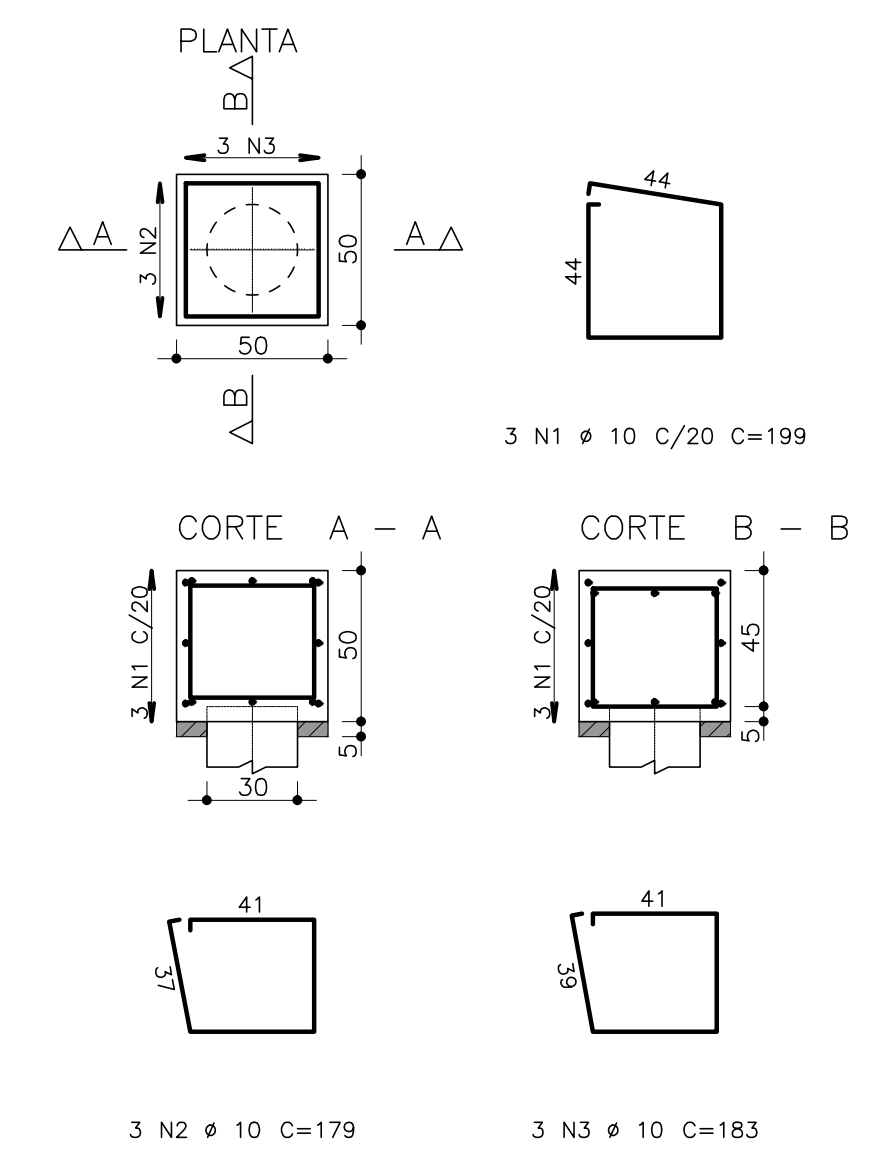
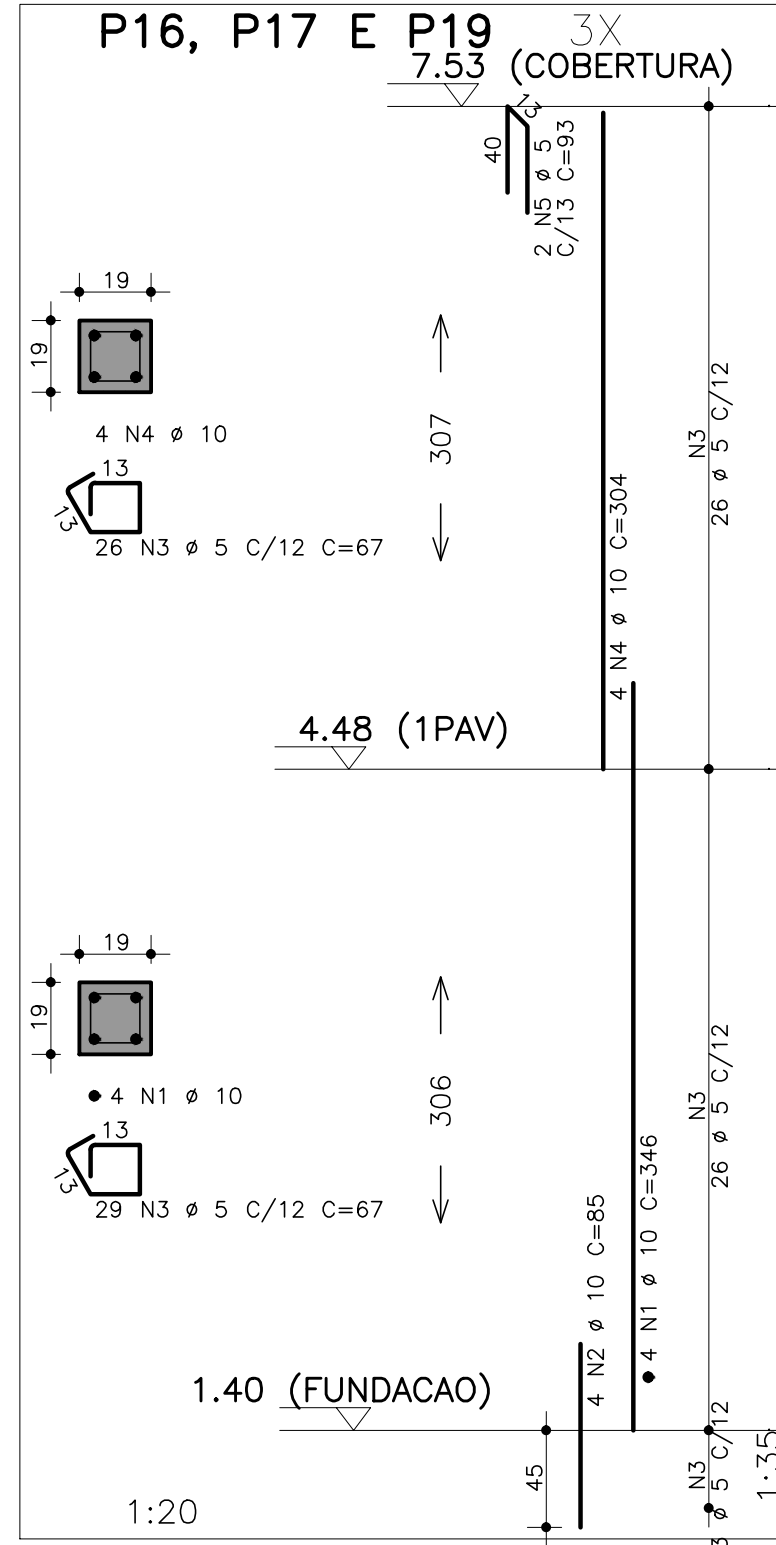
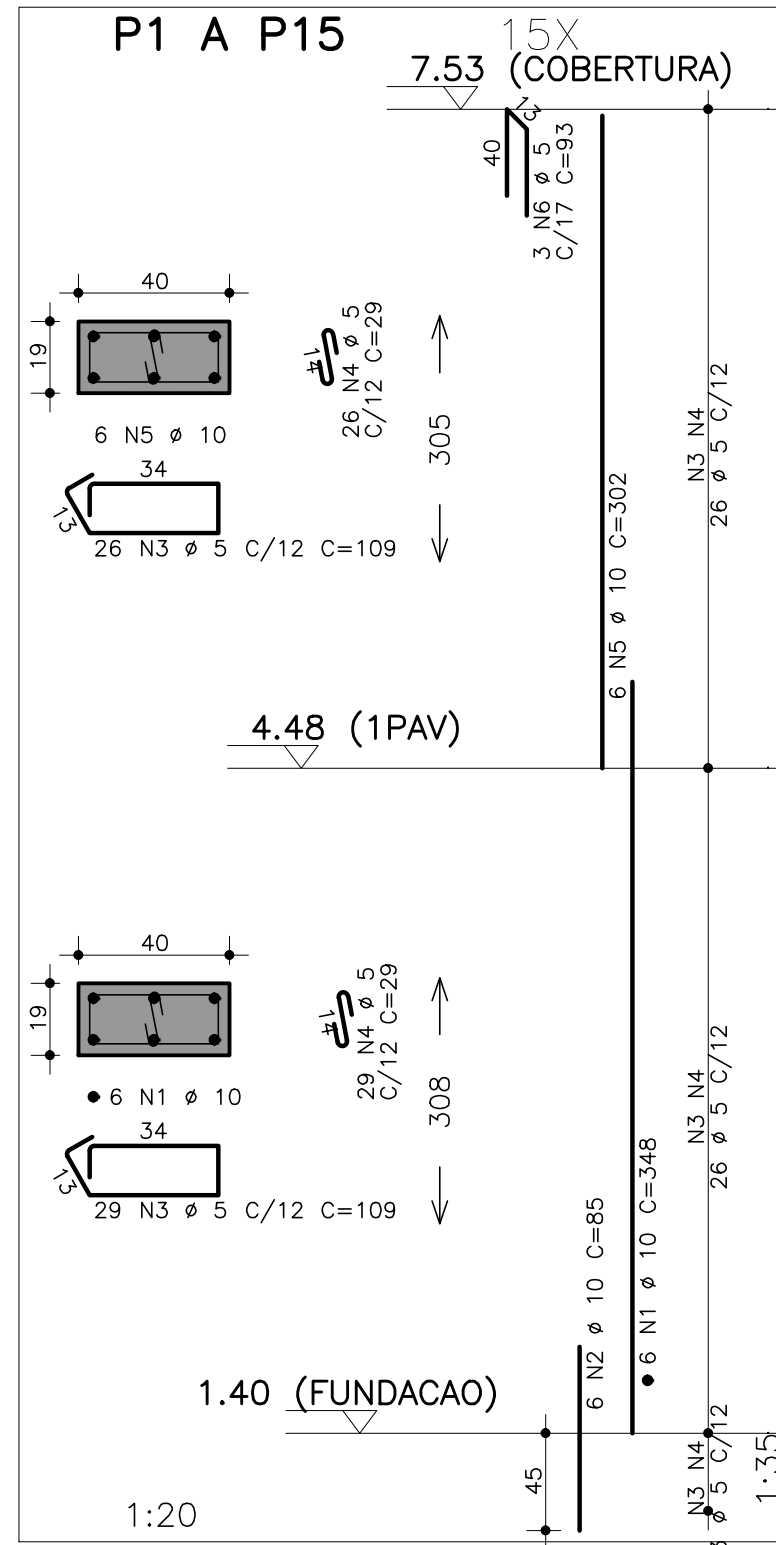
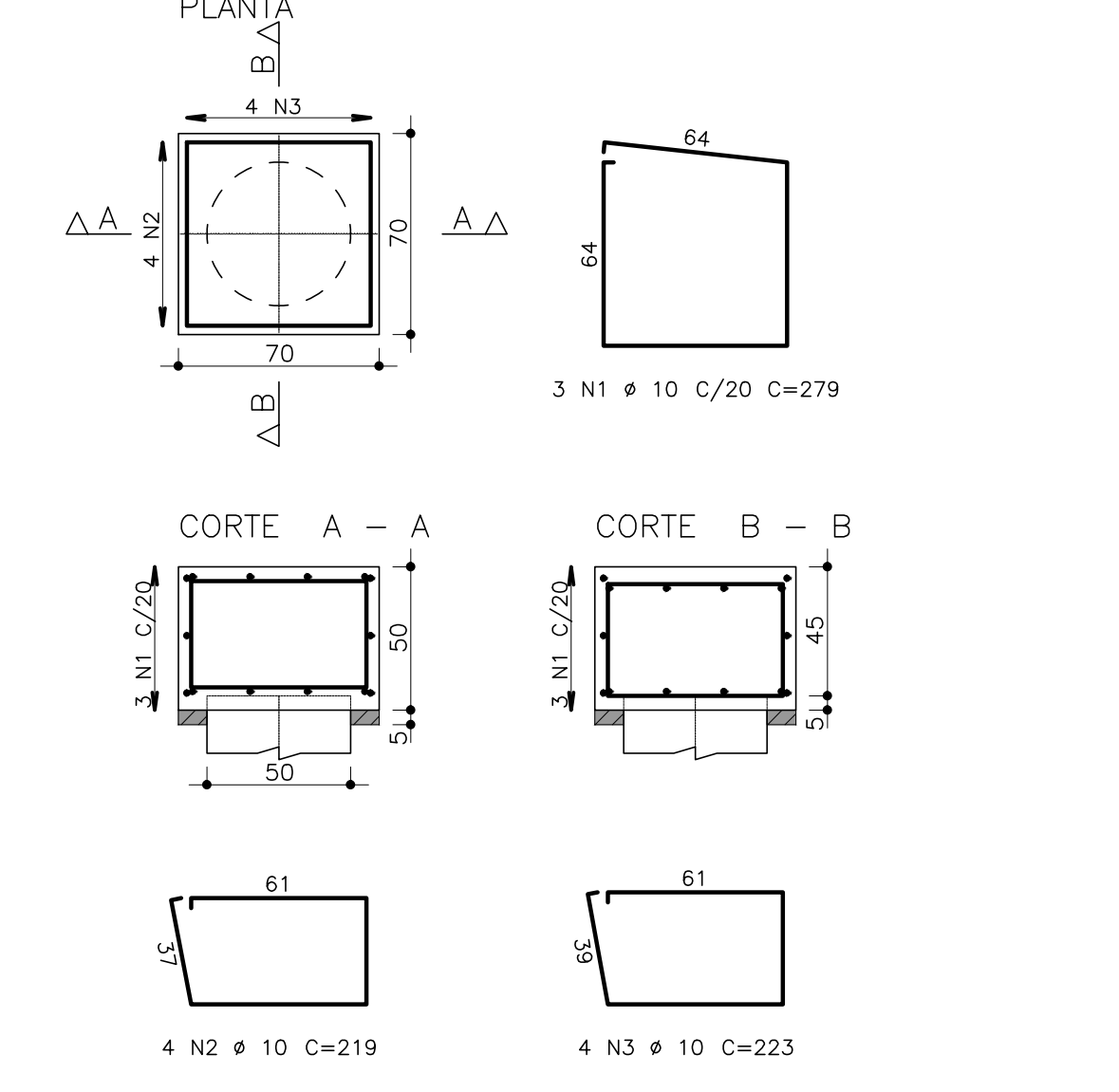


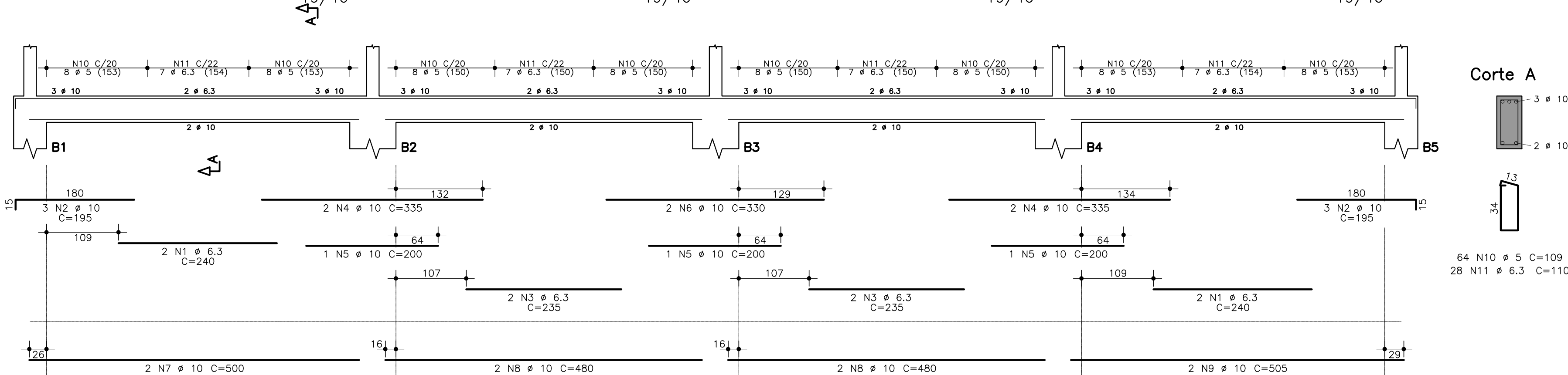
B1=B5=B6=B10=B16=B17=B18=B19
(ESCALA 1:25) 8X



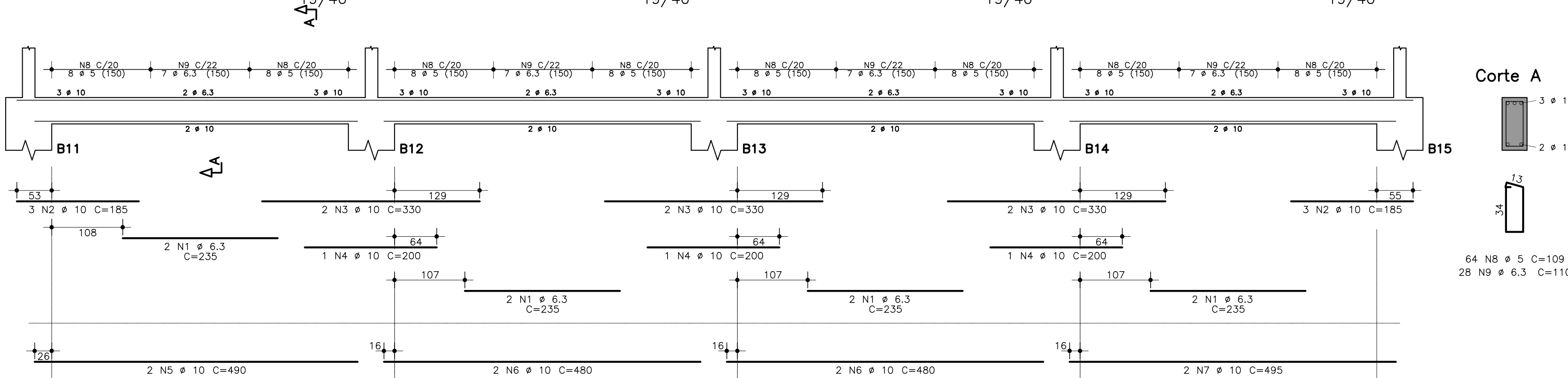
B2=B3=B4=B7=B8=B9=B11=B12=B13=B14=B15
(ESCALA 1:25) 11X



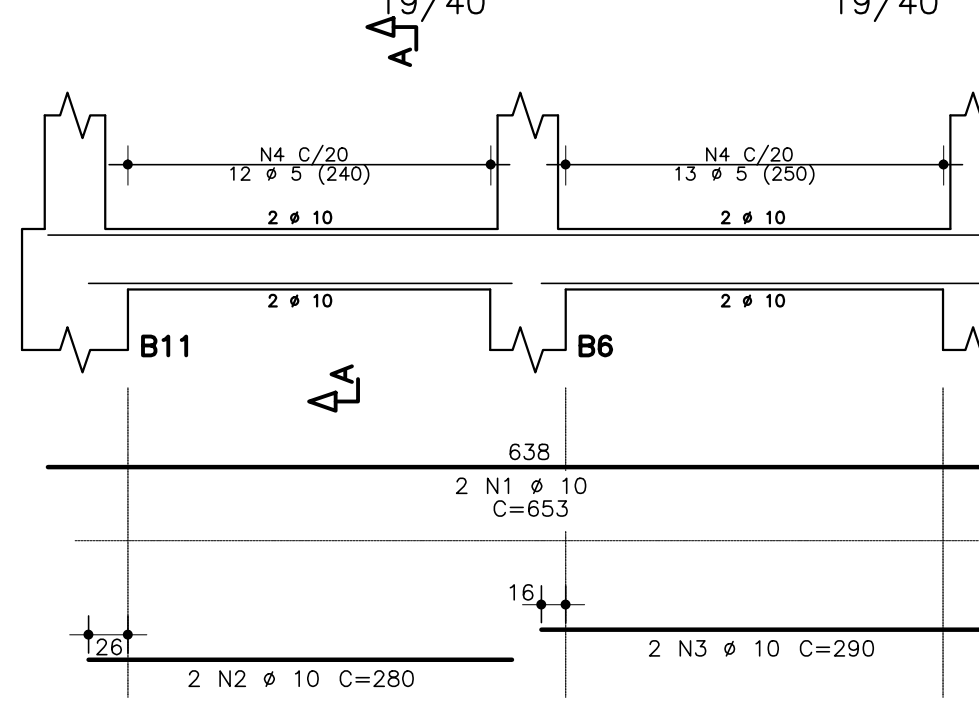
VB1



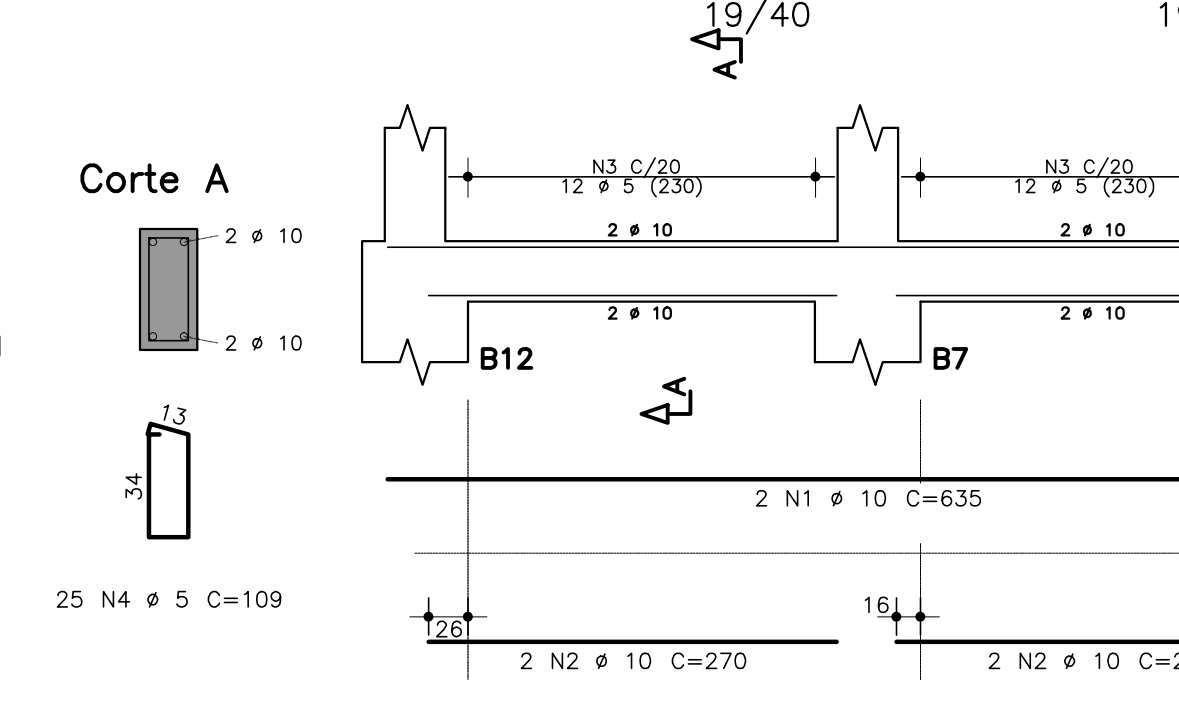
VB2



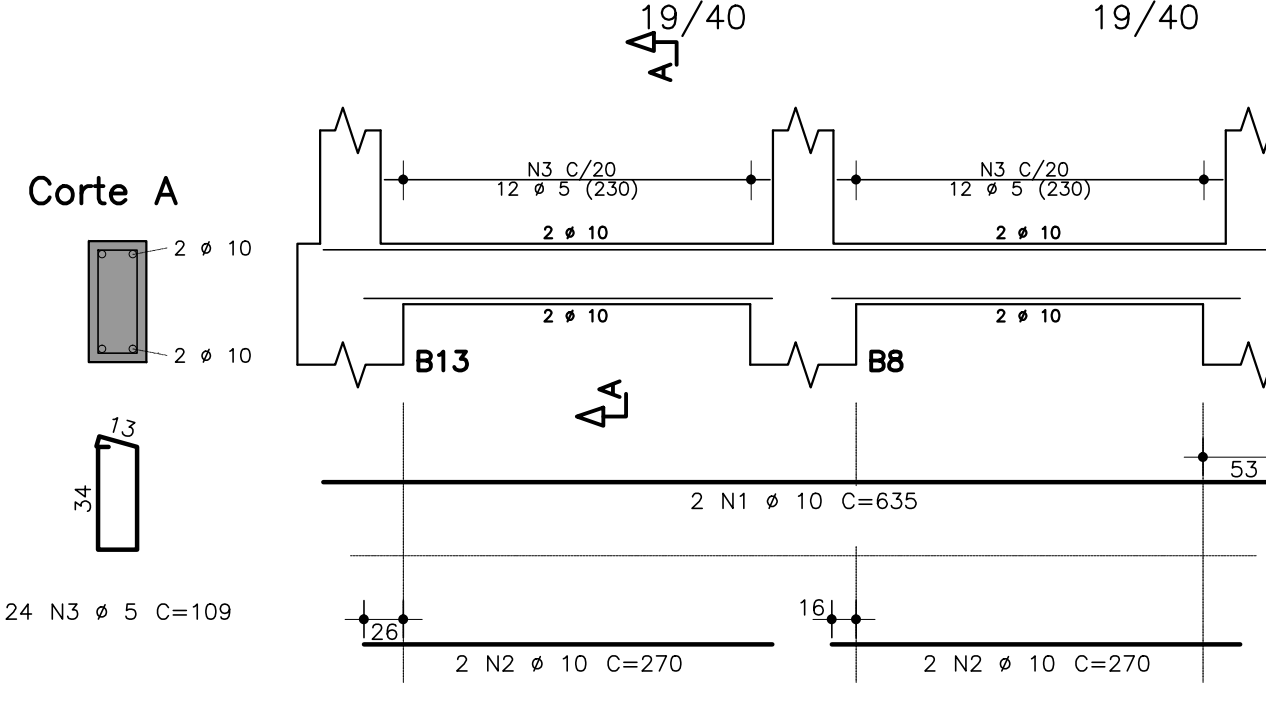
VB3



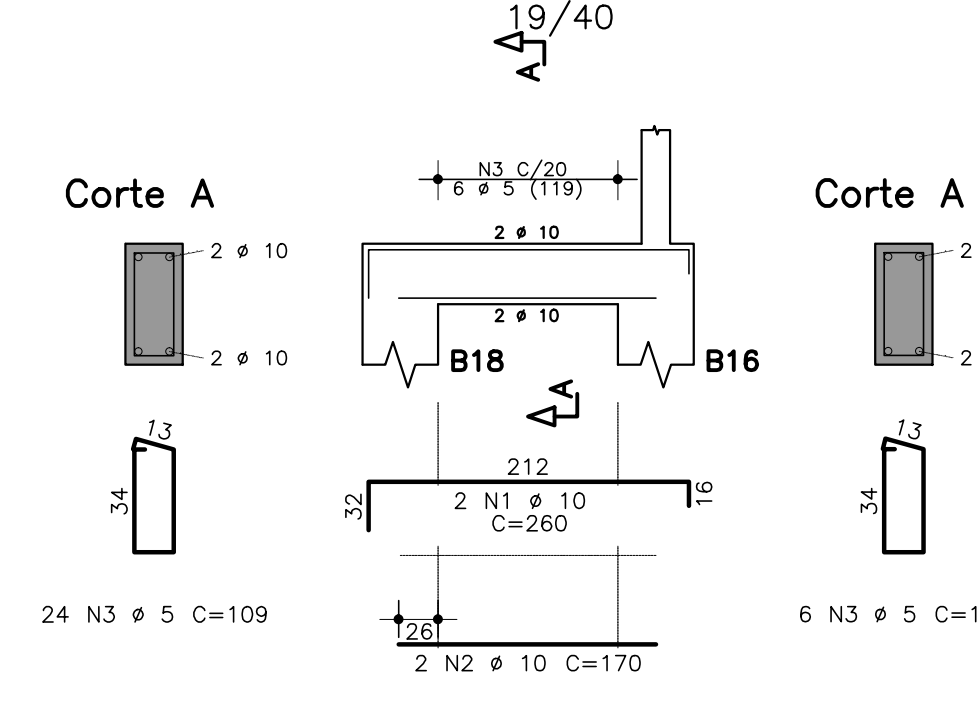
VB4



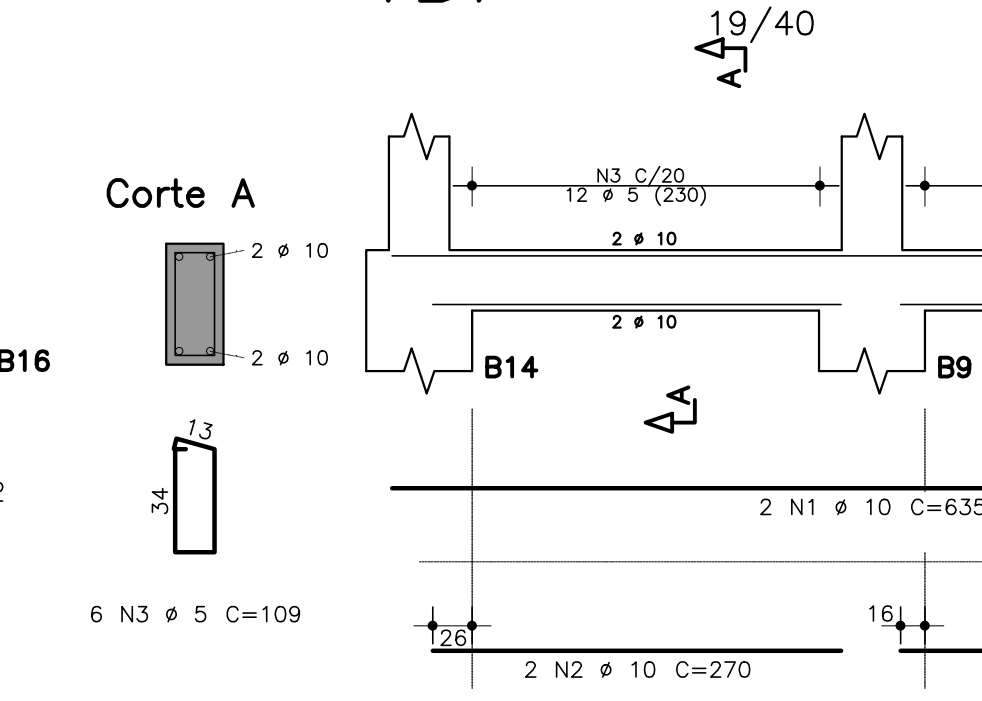
VB5



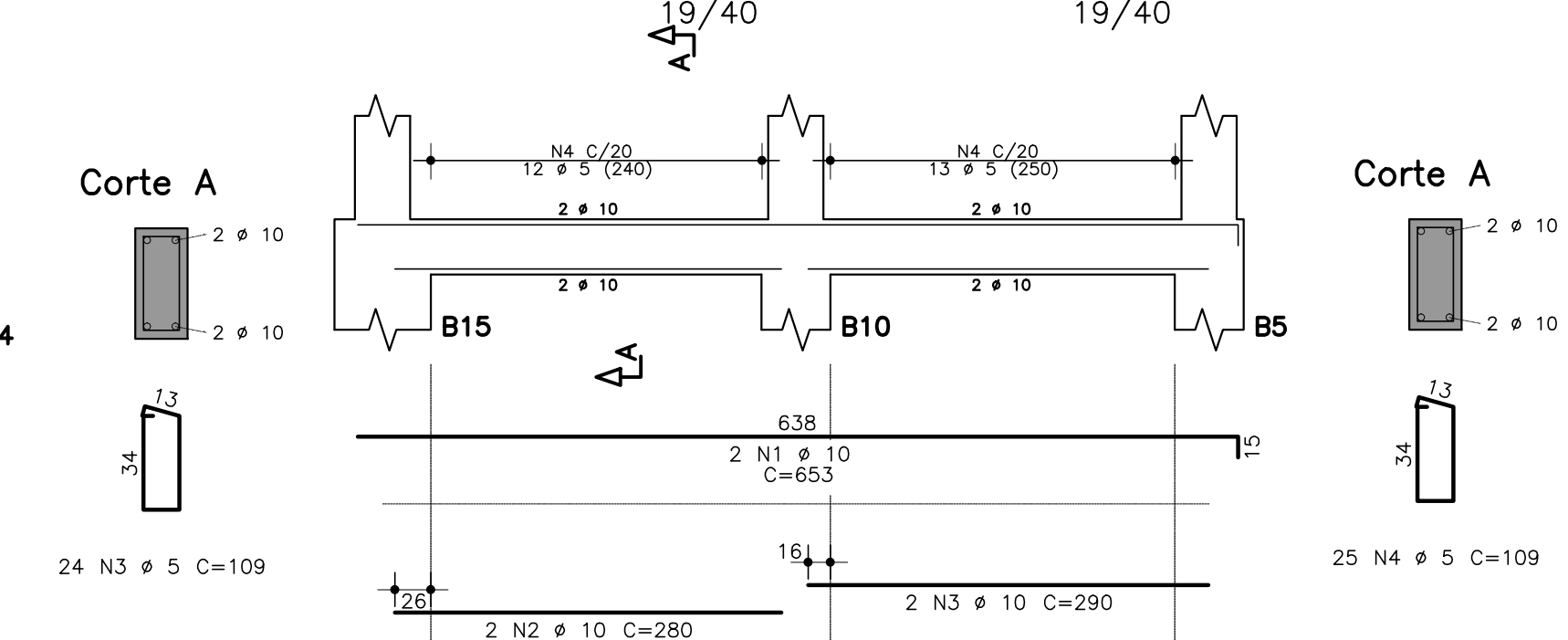
VB6



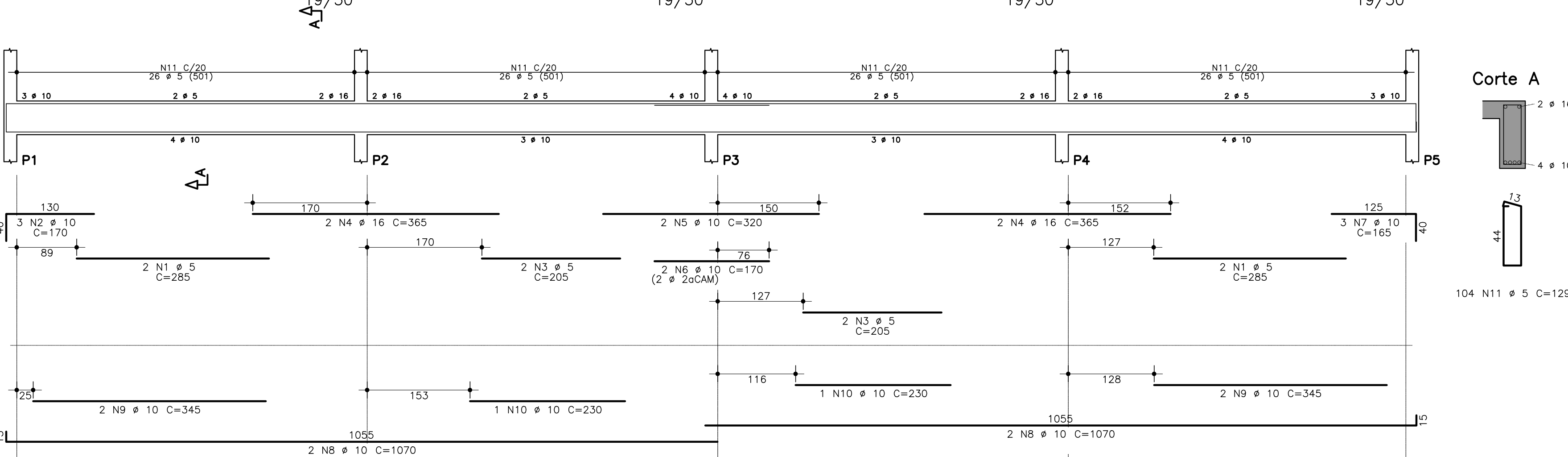
VB7



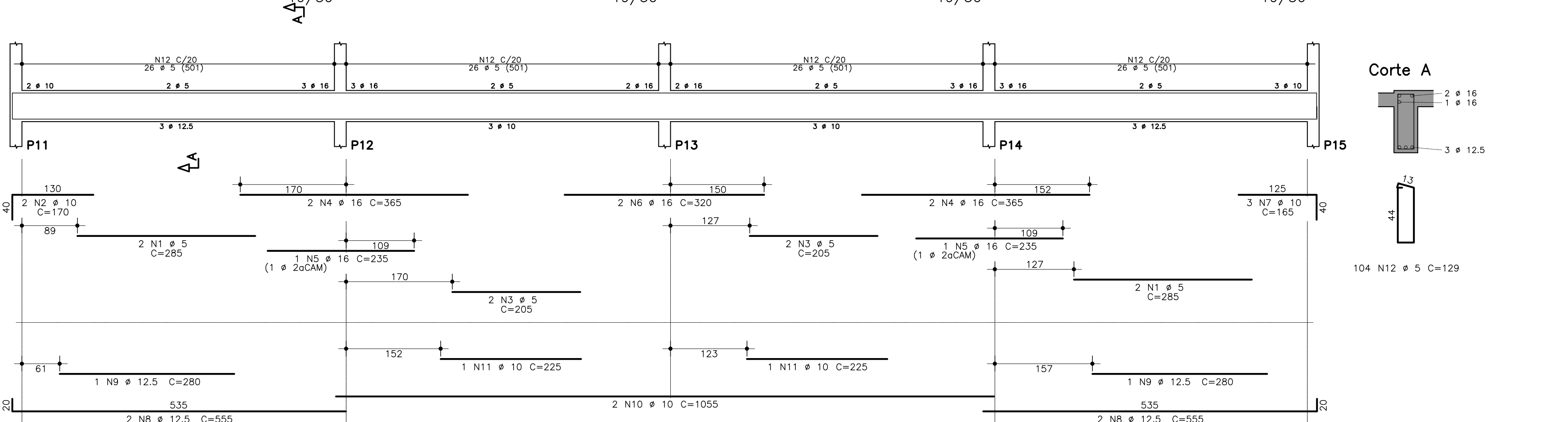
VB8



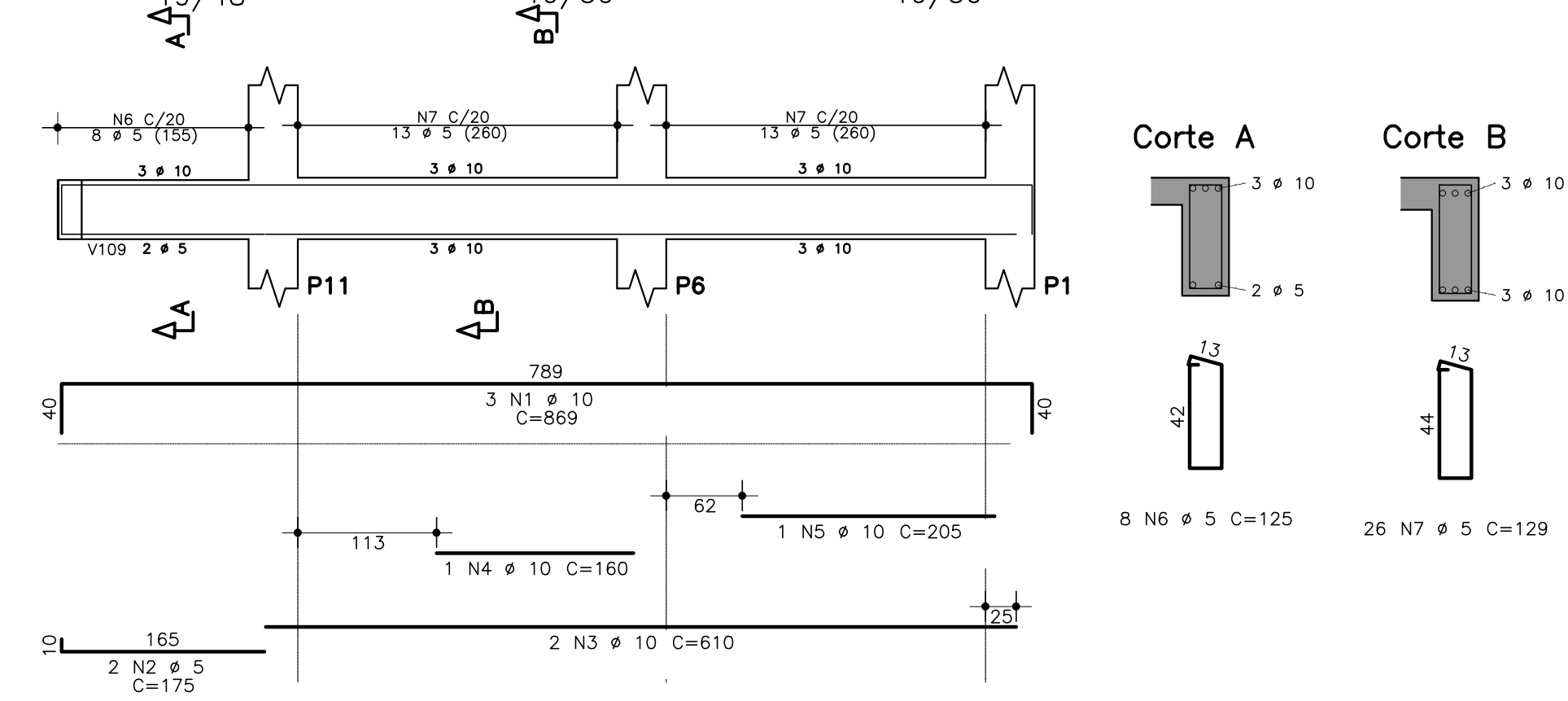
V1



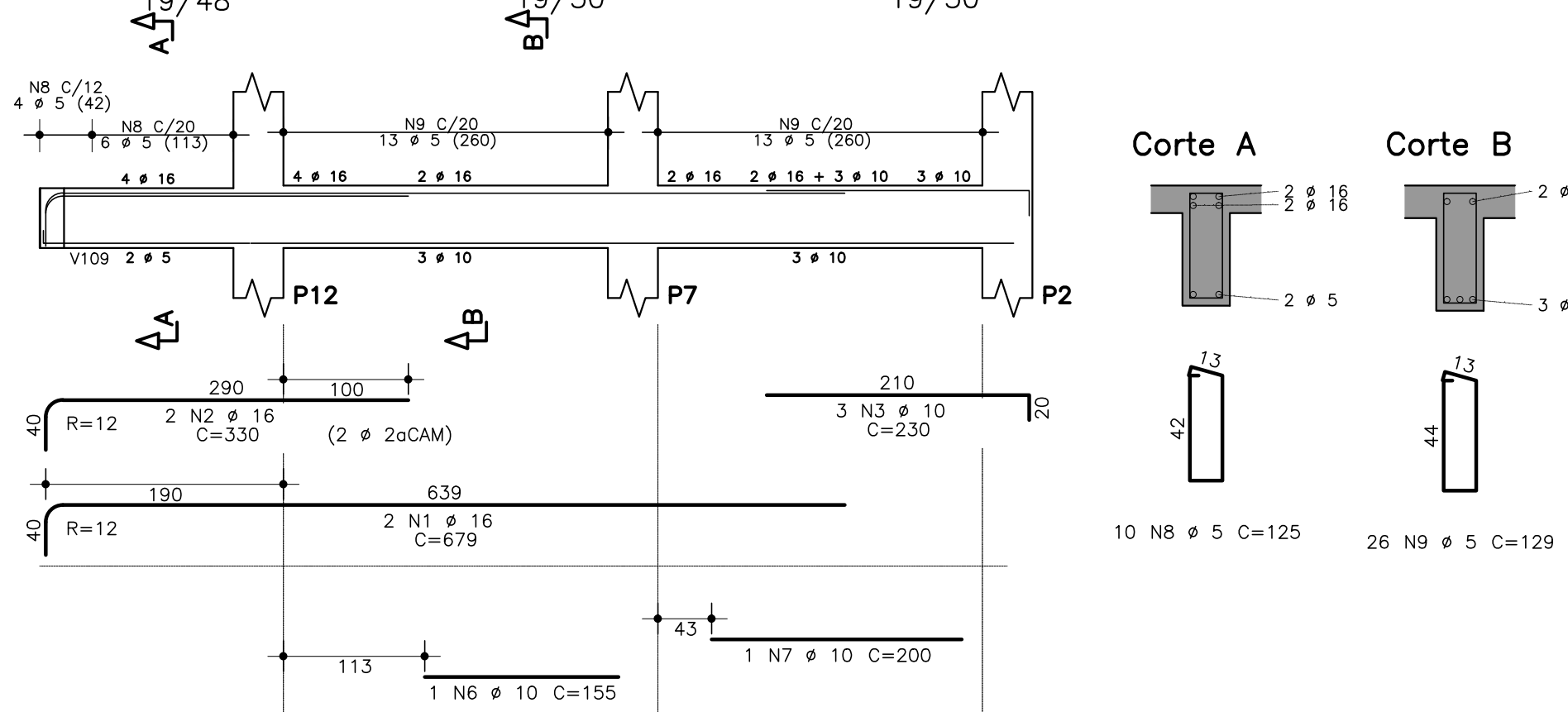
V2



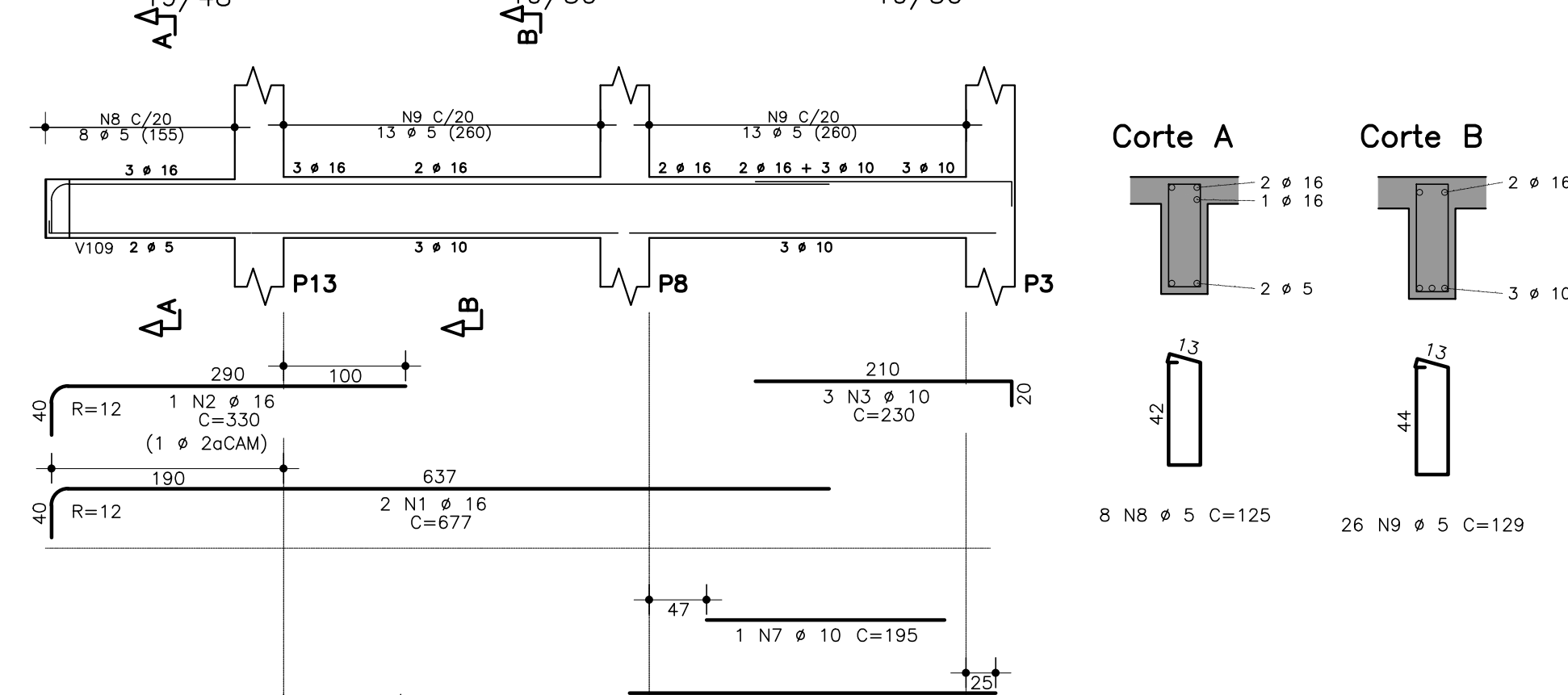
V3



V4



V5



AÇO	POS	BIT (mm)	QUANT	COMPRIMENTO (m)	TOTAL (cm)	
B1=B5=B6=B10=B16=B17=B18=B19	50A	1	10	24	199	4776
B2=B3=B4=B7=B8=B9=B11=B12=B13=B14=B15	50A	2	10	24	179	4266
P1 A P15	50A	3	10	24	183	4392
P16, P17 E P19	50A	1	10	31	219	9207
V1	50A	1	10	90	48	7650
V2	50A	2	10	80	109	89925
V3	50A	4	5	825	29	23525
V4	50A	5	10	44	302	27180
V5	50A	6	5	83	4185	
VB1	50A	1	10	90	48	7650
VB2	50A	2	10	80	109	89925
VB3	50A	4	5	825	29	23525
VB4	50A	5	10	44	302	27180
VB5	50A	6	5	83	4185	
VB6	50A	1	10	90	48	7650
VB7	50A	2	10	80	109	89925
VB8	50A	4	5	825	29	23525
V1	50A	1	10	90	48	7650
V2	50A	2	10	80	109	89925
V3	50A	4	5	825	29	23525
V4	50A	5	10	44	302	27180
V5	50A	6	5	83	4185	
VB1	50A	1	10	90	48	7650
VB2	50A	2	10	80	109	89925
VB3	50A	4	5	825	29	23525
VB4	50A	5	10	44	302	27180
VB5	50A	6	5	83	4185	
VB6	50A	1	10	90	48	7650
VB7	50A	2	10	80	109	89925
VB8	50A	4	5	825	29	23525
V1	50A	1	10	90	48	7650
V2	50A	2	10	80	109	89925
V3	50A	4	5	825	29	23525
V4	50A	5	10	44	302	27180
V5	50A	6	5	83	4185	
VB1	50A	1	10	90	48	7650
VB2	50A	2	10	80	109	89925
VB3	50A	4	5	825	29	23525
VB4	50A	5	10	44	302	27180
VB5	50A	6	5	83	4185	
VB6	50A	1	10	90	48	7650
VB7	50A	2	10	80	109	89925
VB8	50A	4	5	825	29	23525

AÇO	BIT (mm)	COMPR (m)	PESO (kg)
60B	5	2027	312
50A	6,3	89	24
50A	10	1694	1020
50A	12,5	28	27
50A	16	77	122
Peso Total	60B =		312 kg
Peso Total	50A =		1193 kg



PREFEITURA MUNICIPAL DE SANTA LUZIA
ADM. DELEGADO CHRISTIANO XAVIER

CONTEUDO DA PRONCHIA:

E.M. ANA ZÉLIA DE MORAIS LARA

PROJETO DE ESTRUTURA

ARMAÇÕES - BLOCOS, PILARES E VIGAS

INDICADA

DATA: 23/01/2020

FOLHA: 01/04

REVISÃO: 0

DIREITOS RESERVADOS - (S) PRESTAÇÃO DE SERVIÇO PROPRIO
A REPRODUÇÃO OU EXECUÇÃO TOTAL OU PARCIAL, SEM PRÉVIA AUTORIZAÇÃO, SUJEITA A AUTOR AS MEDIDAS LEGAIS CABÍVEIS.